

**This electronic collection of documents is provided  
for the convenience of the user  
and is Not a Certified Document –**

**The documents contained herein were originally issued  
and sealed by the individuals whose names and license  
numbers appear on each page, on the dates appearing  
with their signature on that page.**

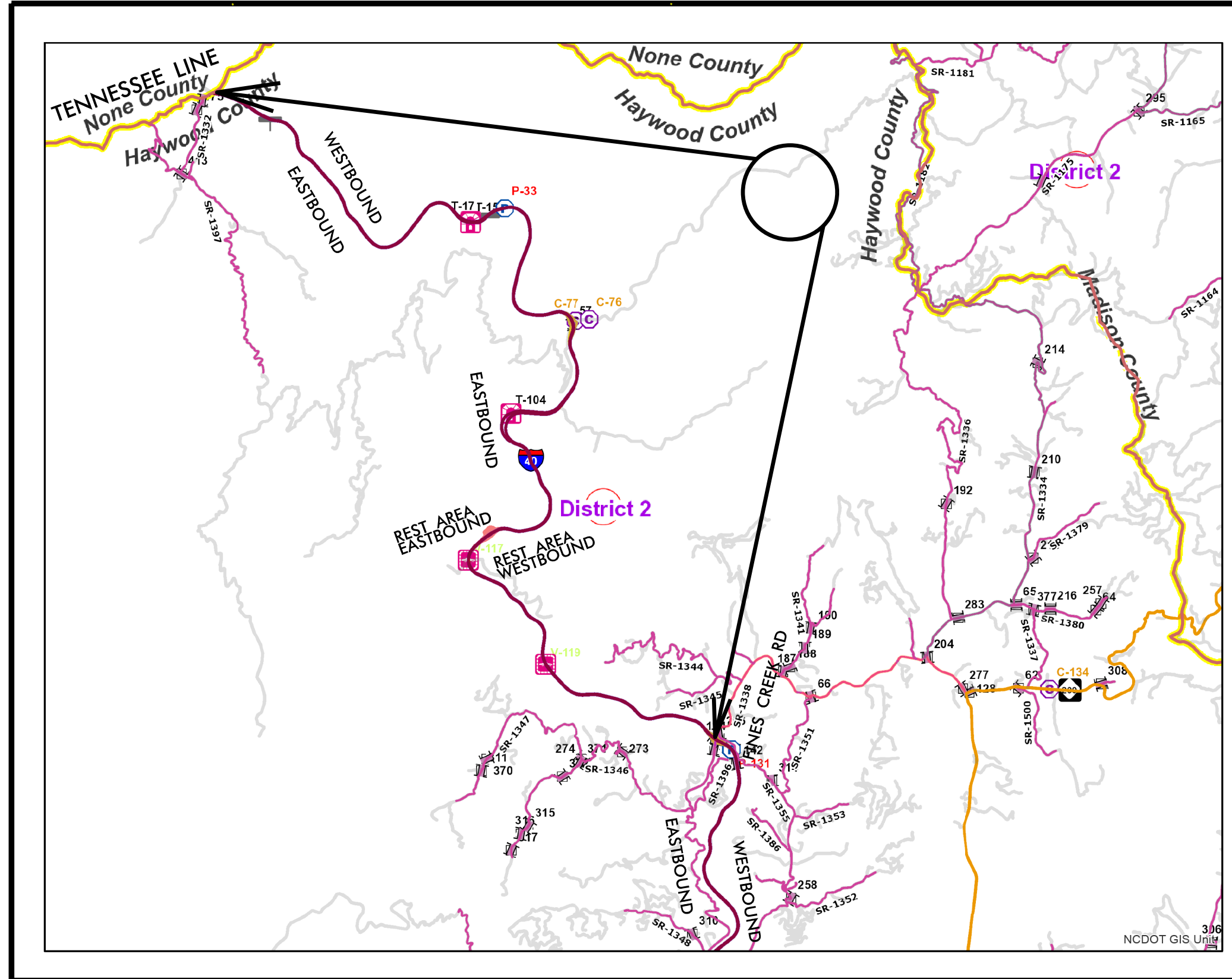
**This file or an individual page  
shall not be considered a certified document.**

# HAYWOOD COUNTY

PROJECT REFERENCE NO.		SHEET NO.
41665.10A		
STATE PROJECT	F.A. PROJECT NO.	DESCRIPTION
		DN00626

**TIP PROJECT:**

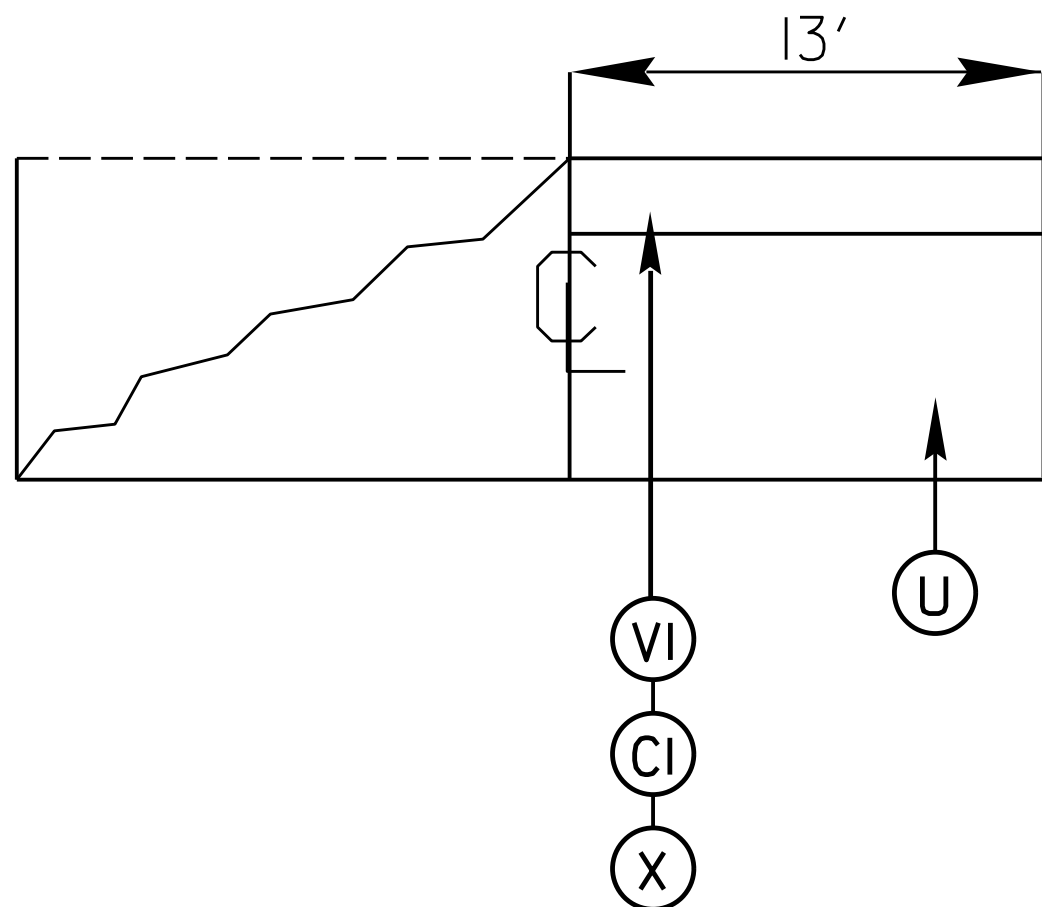
**CONTRACT: DN00626**



PROJECT REFERENCE NO.		SHEET NO.
41665.10A		2
STATE PROJECT	F.A. PROJECT NO.	DESCRIPTION
		DN00626

## SURFACING SCHEDULE

**TYPICAL 1**  
**SITE 1,2,4,5,7,8,10**

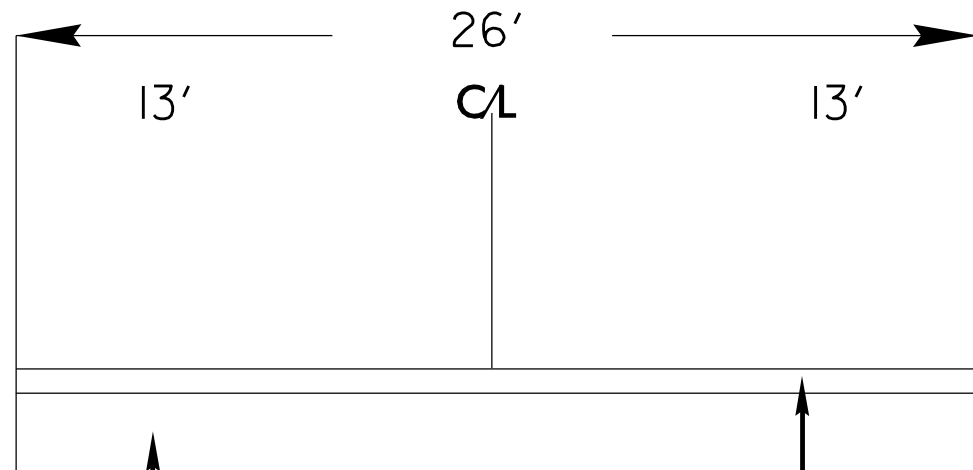


ITEM NO	DESCRIPTION
X	OPEN GRADED ASPHALT FRICTION COURSE TYPE FC-1 MODIFIED AT AN AVERAGE RATE OF 67.5 LBS.PER.SQ.YD
C1	PROP. APPROX. 1 1/2" ASPHALT CONCRETE SURFACE COURSE, TYPE S9.5D AT AN AVERAGE RATE OF 168 LBS.PER.SQ.YD
D1	PROP. APPROX. 3" ASPHALT CONCRETE SURFACE COURSE, TYPE I190D AT AN AVERAGE RATE OF 342 LBS.PER.SQ.YD
V1	MILLED ASPHALT PAVEMENT 2 1/4" IN DEPTH IN LOCATIONS AS DIRECTED BY PROJECT ENGINEER
V2	MILLED ASPHALT PAVEMENT 5 1/4" IN DEPTH IN LOCATIONS AS DIRECTED BY PROJECT ENGINEER
U	EXISTING ASPHALT

PROJECT REFERENCE NO.		SHEET NO.
41665.10A		3
STATE PROJECT	F.A. PROJECT NO.	DESCRIPTION
		DN00626

# TYPICAL 2

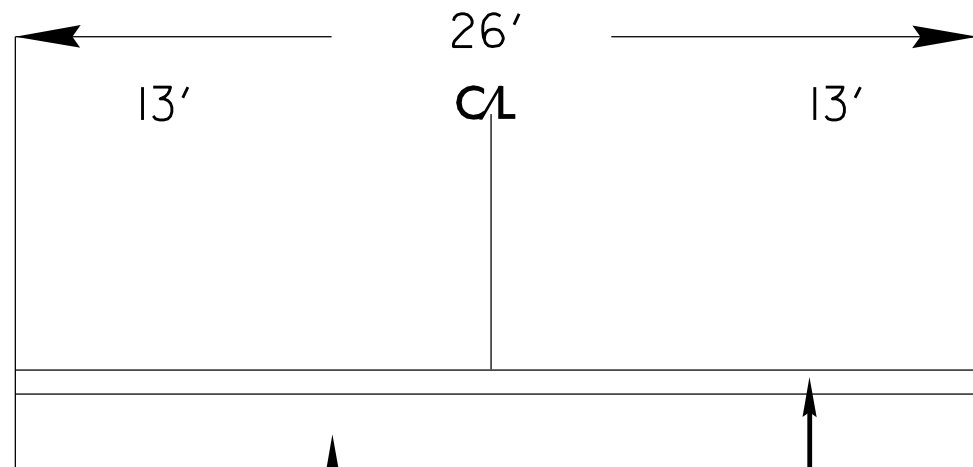
## SITE 3,6



⊙ U

# TYPICAL 3

## SITE 9



⊙ U

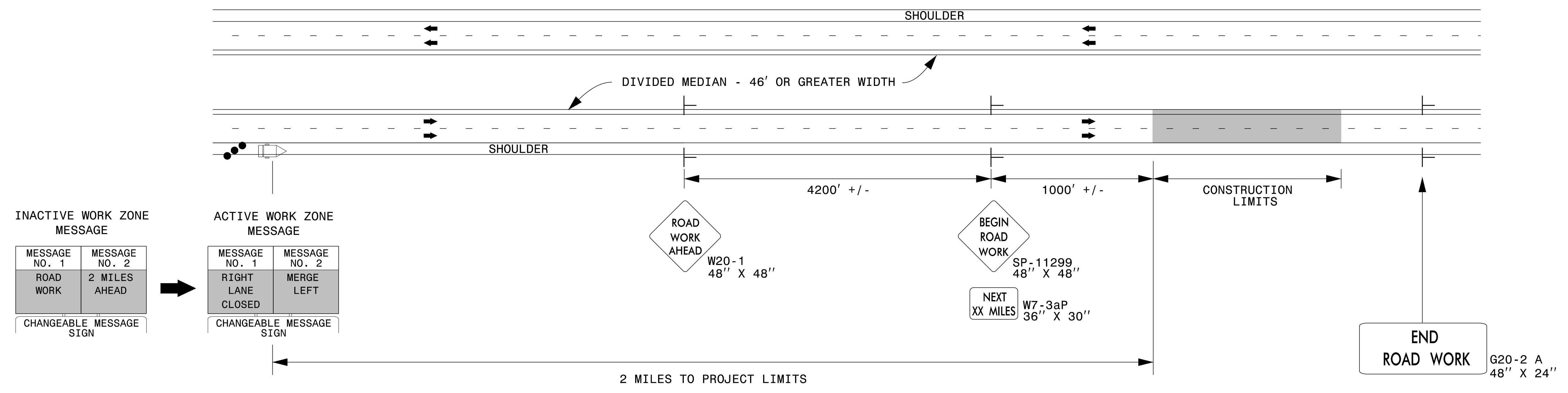
⊙ X  
⊙ CI  
⊙ VI

⊙ X  
⊙ CI  
⊙ DI  
⊙ V2

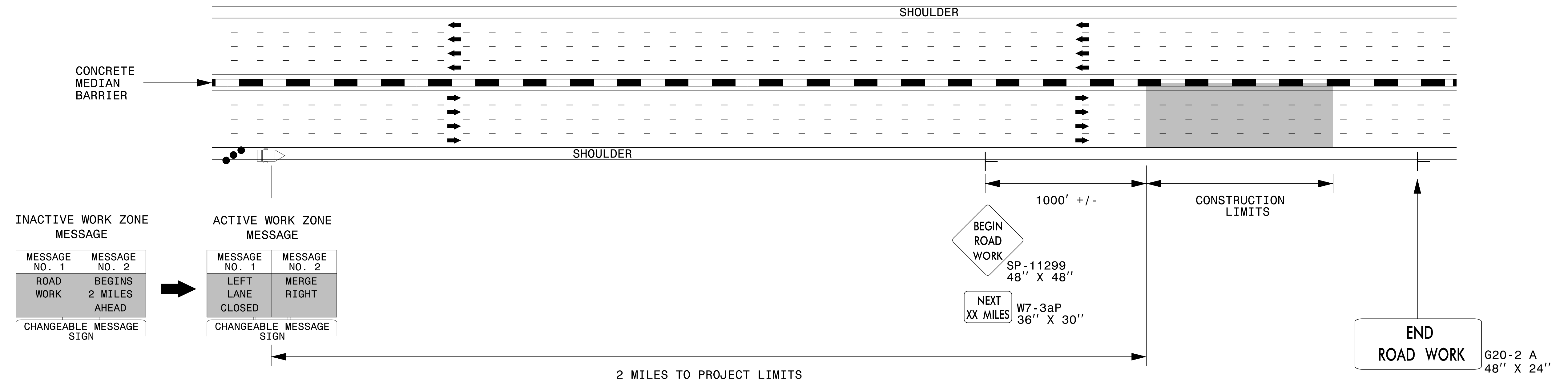
## SURFACING SCHEDULE

ITEM NO	DESCRIPTION
X	OPEN GRADED ASPHALT FRICTION COURSE TYPE FC-1 MODIFIED AT AN AVERAGE RATE OF 67.5 LBS.PER.SQ.YD
CI	PROP. APPROX. 1 1/2" ASPHALT CONCRETE SURFACE COURSE, TYPE S9.5D AT AN AVERAGE RATE OF 168 LBS.PER.SQ.YD
DI	PROP. APPROX. 3" ASPHALT CONCRETE SURFACE COURSE, TYPE I190D AT AN AVERAGE RATE OF 342 LBS.PER.SQ.YD
V1	MILLED ASPHALT PAVEMENT 2 1/4" IN DEPTH IN LOCATIONS AS DIRECTED BY PROJECT ENGINEER
V2	MILLED ASPHALT PAVEMENT 5 1/4" IN DEPTH IN LOCATIONS AS DIRECTED BY PROJECT ENGINEER
U	EXISTING ASPHALT

## DIVIDED MEDIANS WITH WIDTHS 46' OR GREATER



## DIVIDED MEDIANS WITH WIDTHS LESS THAN 46' OR WITH PERMANENT MEDIAN BARRIER

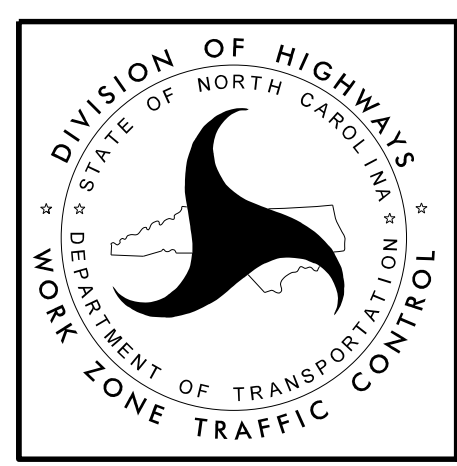


**NOTES:**

- 1) LATERAL CLEARANCE AT ALL SIGN LOCATIONS SHALL BE 6' AS MEASURED FROM THE EDGE OF PAVEMENT.
- 2) MOUNT SIGNS THAT ARE LARGER THAN 10 SQUARE FEET IN AREA ON TWO OR MORE WOOD OR U-CHANNEL SUPPORTS. PERFORATED SQUARE TUBING SUPPORT SYSTEMS MAY SUPPORT LARGER AREAS ON A SINGLE SUPPORT. FOLLOW MANUFACTURER'S RECOMMENDATIONS. THESE SYSTEMS SHALL BE NCHRP 350 COMPLIANT AND NCDOT APPROVED.
- 3) FOR MEDIAN WIDTHS LESS THAN 46' (MEASURED EDGELINE TO EDGELINE) USE THE BOTTOM DRAWING.
- 4) IF STATIONARY GENERAL WARNING SIGNS ARE USED, THEY WILL BE PAID FOR PER SECTION 104 OF THE NCDOT STANDARD SPECIFICATIONS AS EXTRA WORK.
- 5) INSTALL "ROAD WORK AHEAD" (W20-1) ALONG ENTRANCE RAMP 500' PRIOR TO RAMP TERMINAL, AND "END ROAD WORK" (G20-2a) AT THE END OF EXIT RAMP WITHIN THE WORK ZONE.
- 6) IF MILLED AREAS ARE NOT PAVED BACK BY THE END OF THE WORK DAY, PORTABLE SIGNS SHALL BE USED TO WARN DRIVERS OF THE PRESENT CONDITIONS. THESE ARE TO INCLUDE, BUT NOT LIMITED TO "ROUGH ROAD" W8-8, "UNEVEN LANES" W8-11, "GROOVED PAVEMENT" W8-15 w/MOTORCYCLE PLAQUE MOUNTED BELOW. THESE ARE TO BE DOUBLE INDICATED ON MULTI-LANE ROADWAYS WITH SPEED LIMITS 45 MPH AND GREATER AND WITH DIVIDED MEDIANS OF 46' OR GREATER. THESE PORTABLE SIGNS ARE INCIDENTAL TO THE OTHER ITEMS OF WORK INCLUDED IN THE TEMPORARY TRAFFIC CONTROL (LUMP SUM) PAY ITEM.

**LEGEND**

- CHANGEABLE MESSAGE SIGN (CMS)
- STATIONARY SIGN
- DIRECTION OF TRAFFIC FLOW
- TRAFFIC DRUM



**RESURFACING ADVANCE WARNING SIGNS FOR HIGH SPEED FACILITIES ≥ 60 MPH**

3/23/2015 C:\Users\rmgarrrett\Downloads\Resurfacing\_AdvWarn\_HSpd.dgn User:rmgarrrett

PROJECT NO.	SHEET NO.	TOTAL NO.
41665.10A	5	

## SUMMARY OF QUANTITIES

PROJECT NO	COUNTY	MAP NO	ROUTE	DESCRIPTION	TYP NO	LANES	LANE TYPE	FINAL SURFACE TESTING REQUIRED	WARM MIX ASPHALT REQUIRED	LENGTH	WIDTH	1297000000-E		1508000000-E	1524200000-E	1575000000-E	1577000000-E	1662000000-E	
												2 1/4" MILLING	5 1/4" MILLING	INTERMEDIATE COURSE, I19.0D	SURFACE COURSE, S9.5D	ASPHALT BINDER FOR PLANT MIX	POLYMER MODIFIED ASPHALT BINDER FOR PLANT MIX	OGAFC, TYPE FC-1 MOD	
											MI	FT	SY	SY	TONS	TONS	TONS	TONS	TONS
41665.10A	Haywood	1	I-40 WEST SITE 1	MP 14.9	1	2	MD	NO	NO	0.076	13	580			52		5	26	
<b>TOTAL FOR MAP NO. 1</b>											<b>0.076</b>		<b>580</b>			<b>52</b>		<b>5</b>	<b>26</b>
41665.10A	Haywood	2	I-40 WEST SITE 2	MP 7.5	1	2	MD	NO	NO	0.265	13	2,021			182		16	90	
<b>TOTAL FOR MAP NO. 2</b>											<b>0.265</b>		<b>2,021</b>			<b>182</b>		<b>16</b>	<b>90</b>
41665.10A	Haywood	3	I-40 WEST SITE 3	MP 4.78	1	2	MD	NO	NO	0.015	26	229			20		2	10	
<b>TOTAL FOR MAP NO. 3</b>											<b>0.015</b>		<b>229</b>			<b>20</b>		<b>2</b>	<b>10</b>
41665.10A	Haywood	4	I-40 WEST SITE 4	MP 3.5	1	2	MD	NO	NO	0.076	13	580			52		4	24	
<b>TOTAL FOR MAP NO. 4</b>											<b>0.076</b>		<b>580</b>			<b>52</b>		<b>4</b>	<b>24</b>
41665.10A	Haywood	5	I-40 WEST SITE 5	MP 2.75	1	2	MD	NO	NO	0.114	13	869			78		7	39	
<b>TOTAL FOR MAP NO. 5</b>											<b>0.114</b>		<b>869</b>			<b>78</b>		<b>7</b>	<b>39</b>
41665.10A	Haywood	6	I-40 EAST SITE 6	MP 0	3	2	MD	NO	NO	0.019	26	290			52		4	13	
<b>TOTAL FOR MAP NO. 6</b>											<b>0.019</b>		<b>290</b>			<b>52</b>		<b>4</b>	<b>13</b>
41665.10A	Haywood	7	I-40 EAST SITE 7	MP 1.3	1	2	MD	NO	NO	0.047	13	359			32		3	16	
<b>TOTAL FOR MAP NO. 7</b>											<b>0.047</b>		<b>359</b>			<b>32</b>		<b>3</b>	<b>16</b>
41665.10A	Haywood	8	I-40 EAST SITE 8	MP 3.75	1	2	MD	NO	NO	0.095	13	725			65		6	32	
<b>TOTAL FOR MAP NO. 8</b>											<b>0.095</b>		<b>725</b>			<b>65</b>		<b>6</b>	<b>32</b>
41665.10A	Haywood	9	I-40 EAST SITE 9	MP 11	2	2	MD	NO	NO	0.038	26		580	106	53	5	5	26	
<b>TOTAL FOR MAP NO. 9</b>											<b>0.038</b>			<b>580</b>	<b>106</b>	<b>53</b>	<b>5</b>	<b>5</b>	<b>26</b>
41665.10A	Haywood	10	I-40 EAST SITE 10	MP 14.9	2	2	MD	NO	NO	0.038	26	580			52		5	26	
<b>TOTAL FOR MAP NO. 10</b>											<b>0.038</b>		<b>580</b>			<b>52</b>		<b>5</b>	<b>26</b>
<b>TOTAL FOR PROJ NO. TBD</b>											<b>0.783</b>		<b>6,233</b>	<b>580</b>	<b>106</b>	<b>638</b>	<b>5</b>	<b>57</b>	<b>302</b>
													<b>6,813</b>						
<b>GRAND TOTAL</b>											<b>0.783</b>		<b>6,233</b>	<b>580</b>	<b>106</b>	<b>638</b>	<b>5</b>	<b>57</b>	<b>302</b>
													<b>6,813</b>						

PROJECT NO.	SHEET NO.	TOTAL NO.
41665.10A	6	

## THERMOPLASTIC AND PAINT QUANTITIES

PROJECT NO	COUNTY	MAP NO	ROUTE	DESCRIPTION	TYP NO	LANES	LANE TYPE	4405000000-E		4457000000-N	4688000000-E	4690000000-E	4815000000-E	4905000000-N	
								PORTABLE WORK ZONE SIGN	TEMPORARY TRAFFIC CONTROL	6" X 90 M WHITE THERMO	6" X 120 M WHITE THERMO	6" WHITE PAINT	SNOW PLOWABLE MARKERS		
								MI	FT	SF	LS	LF	LF	LF	EA
41665.10A	Haywood	1	I-40 WEST SITE 1	MP 14.9	1	2	MD	0.076	13	96	1.00	400	100	500	5
<b>TOTAL FOR MAP NO. 1</b>								<b>0.076</b>		<b>96</b>	<b>1</b>	<b>400</b>	<b>100</b>	<b>500</b>	<b>5</b>
41665.10A	Haywood	2	I-40 WEST SITE 2	MP 7.5	1	2	MD	0.265	13			1,400	200	1,600	18
<b>TOTAL FOR MAP NO. 2</b>								<b>0.265</b>				<b>1,400</b>	<b>200</b>	<b>1,600</b>	<b>18</b>
41665.10A	Haywood	3	I-40 WEST SITE 3	MP 4.78	1	2	MD	0.015	26			160	40	200	2
<b>TOTAL FOR MAP NO. 3</b>								<b>0.015</b>				<b>160</b>	<b>40</b>	<b>200</b>	<b>2</b>
41665.10A	Haywood	4	I-40 WEST SITE 4	MP 3.5	1	2	MD	0.076	13			400	100	500	5
<b>TOTAL FOR MAP NO. 4</b>								<b>0.076</b>				<b>400</b>	<b>100</b>	<b>500</b>	<b>5</b>
41665.10A	Haywood	5	I-40 WEST SITE 5	MP 2.75	1	2	MD	0.114	13			600	100	700	8
<b>TOTAL FOR MAP NO. 5</b>								<b>0.114</b>				<b>600</b>	<b>100</b>	<b>700</b>	<b>8</b>
41665.10A	Haywood	6	I-40 EAST SITE 6	MP 0	3	2	MD	0.019	26			200	40	240	3
<b>TOTAL FOR MAP NO. 6</b>								<b>0.019</b>				<b>200</b>	<b>40</b>	<b>240</b>	<b>3</b>
41665.10A	Haywood	7	I-40 EAST SITE 7	MP 1.3	1	2	MD	0.047	13			250	80	330	3
<b>TOTAL FOR MAP NO. 7</b>								<b>0.047</b>				<b>250</b>	<b>80</b>	<b>330</b>	<b>3</b>
41665.10A	Haywood	8	I-40 EAST SITE 8	MP 3.75	1	2	MD	0.095	13			500	100	600	8
<b>TOTAL FOR MAP NO. 8</b>								<b>0.095</b>				<b>500</b>	<b>100</b>	<b>600</b>	<b>8</b>
41665.10A	Haywood	9	I-40 EAST SITE 9	MP 11	2	2	MD	0.038	26			409	80	489	6
<b>TOTAL FOR MAP NO. 9</b>								<b>0.038</b>				<b>409</b>	<b>80</b>	<b>489</b>	<b>6</b>
41665.10A	Haywood	10	I-40 EAST SITE 10	MP 14.9	2	2	MD	0.038	26			200	80	280	6
<b>TOTAL FOR MAP NO. 10</b>								<b>0.038</b>				<b>200</b>	<b>80</b>	<b>280</b>	<b>6</b>
<b>TOTAL FOR PROJ NO. TBD</b>								<b>0.783</b>		<b>96</b>	<b>1</b>	<b>4,519</b>	<b>920</b>	<b>5,439</b>	<b>64</b>
<b>GRAND TOTAL</b>								<b>0.783</b>		<b>96</b>	<b>1</b>	<b>4,519</b>	<b>920</b>	<b>5,439</b>	<b>64</b>